



---

OPERATING INSTRUCTIONS | AMP+DAC5

# THE ELEMENT

## SUPPORT

ONLINE

---

CONTACT@JDSSLABS.COM  
JDSSLABS.COM/SUPPORT

BY PHONE

---

314-252-0936  
9:30AM-6PM CST,  
MONDAY THROUGH FRIDAY

BY MAIL

---

909 N BLUFF RD  
COLLINSVILLE, IL 62234  
UNITED STATES

# QUICK SETUP

## STEP 01

Connect AC power adapter to rear power jack (16VAC), then connect to wall outlet

## STEP 02

Connect USB cable between your computer and the USB jack

## STEP 03

Connect headphones to the front Headphone output jack

## STEP 04

Press the Power button on the rear side of the amplifier. Keep volume low until music is playing

## STEP 05

Slowly raise the volume knob to an appropriate listening level.  
*See listening tips on page 5*

# CONFIGURATION

## CONNECTIVITY

The Element accepts two methods of audio input: Digital input via USB, or Analog input via RCA jacks.

Connecting an RCA cable mechanically bypasses the integrated DAC, so that the amplifier only plays audio from your external source.

Maximum RCA Analog Input Level (High Gain):	2.06 VRMS (+8.5 dBU)
Maximum RCA Analog Input Level (Low Gain):	9.93 VRMS (+22.5 dBU)

## SETTING GAIN

Press the gain button to toggle between low or high gain amplification. Always use the lowest gain necessary.

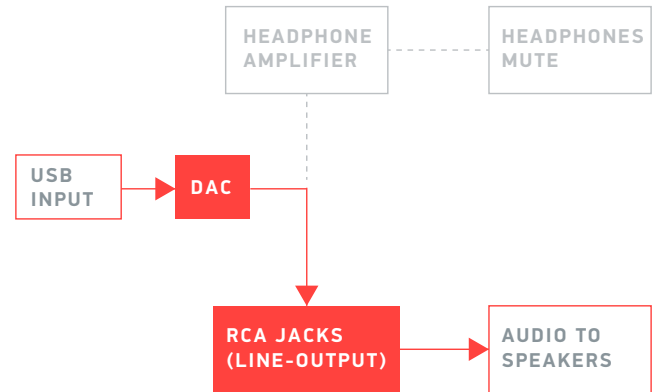
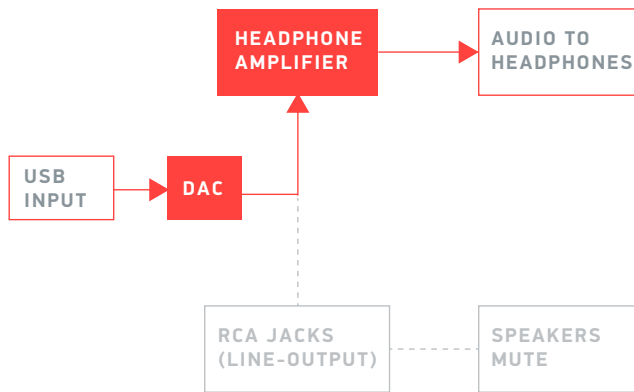
Switch to high gain only when you're unable to achieve desired listening volume at low gain.

# AUTOMATIC DAC LINE-OUTPUT FUNCTIONALITY

Feature available on customized Elements only! Refer to your order for available features.

## ELEMENT TURNED ON

## ELEMENT TURNED OFF



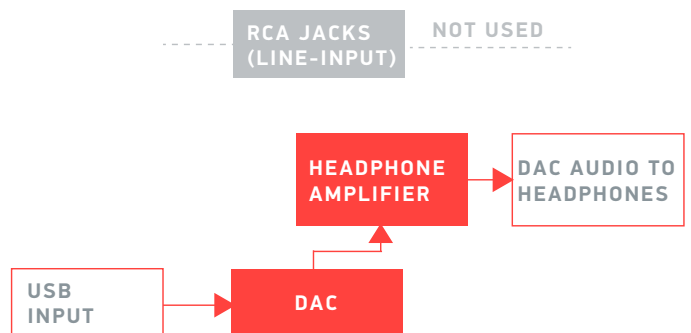
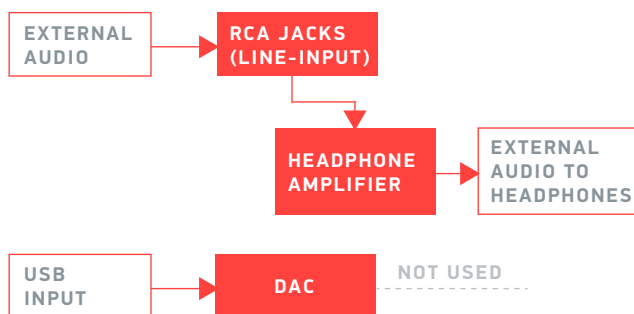
Automatic DAC Line-Output allows you to toggle between headphones and powered speakers simply by pressing the power button.

# ANALOG INPUT FUNCTIONALITY

Feature available on customized Elements only! Refer to your order for available features.

## RCA CABLES CONNECTED

## RCA CABLES DISCONNECTED



Analog Input allows you to connect any external audio player to the Element's headphone amplifier. Connecting an external audio immediately bypasses the Element's DAC.

# LISTENING TIPS

For maximum signal fidelity, set the DAC to 24-bit audio and adjust digital volume slightly below 100% at your computer. Only control volume from the amplifier.

Set sampling frequency to match the majority of your music (i.e., use 44100 Hz for 44.1kHz music).

The Element can amplify headphones to dangerously loud audio. Listen safely to conserve your hearing:  
[www.hearingloss.org](http://www.hearingloss.org)

To ensure an optimal noise floor, always position headphone amplifiers as far away as possible from wireless devices.

# OPERATING CARE

The Element uses a high current power supply and runs warm to the touch. Avoid covering the top and rear sides.

The Element can be safely powered on 24/7. For maximum relay lifespan, cycle power at least once per month.

Do not lift amplifier by knob, or turn knob beyond its limits.

Use gentle force when inserting or removing cables.

# SETUP

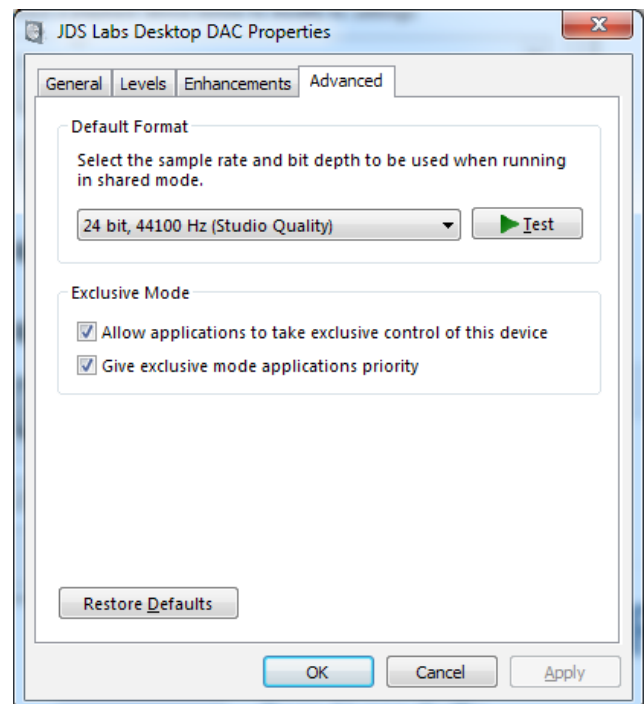
## COMPUTER SETUP

The Element requires no drivers in Windows, Mac OS X, or Linux. Most operating systems immediately recognize and set the DAC as the default playback device. To manually select the playback device in:

**Windows Vista/7/8** - Right click volume icon in taskbar, click Playback Devices, set JDS Labs Desktop DAC as default device. Suggested Properties (Right click JDS Labs Desktop DAC “Speakers” icon):

- Enhancements: Check “Disable all enhancements”
- Advanced: See Listening Tips

**Mac OS X** - Ensure JDS Labs Desktop DAC is selected from Audio Devices



# TROUBLESHOOTING

## AMPLIFIER DOES NOT TURN ON

**Cause:** Missing or loose power adapter connection

**Solution:** Firmly connect AC adapter to 16VAC power jack

## INTERNAL LED FLASHES, THEN TURNS OFF

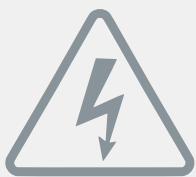
**Cause:** Wrong power adapter detected

**Solution:** Please see Power Adapters section

## NO SOUND IN ONE CHANNEL

**Cause:** Bad cable, or incorrect computer settings

**Solution:** Check balance settings; try another headphone or RCA cable. Some Mac OS X systems will pan audio to the Left channel upon initial connection of a DAC. User must restore balance to center.



## POWER ADAPTERS

**ATTENTION:** Incorrect power adapters can result in capacitor explosion hazards and device damage. Only use the power adapter included with your Element:

Type: AC-to-AC Transformer	Output Voltage: 16 VAC
Current: Minimum 1000mA	Connector: 2.1x55.mm (ID x OD)



Application for Council Directives 2004/108/EC, 2006/95/EC, 2002/95/EC. Conformity declared for EN55022:2011, EN611000-3-2, EN61000-3-3, EN55024-2



This equipment has been tested and found to comply with the limits for a Class B digital device, pursuant to part 15 of the FCC Rules.